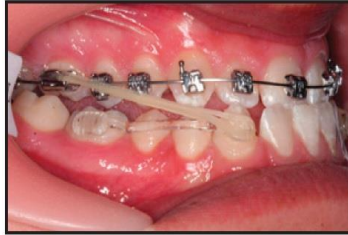


COOKE

ORTHODONTICS

Carriere Motion Appliance CL3



What is the Carriere Motion Class III Correction Appliance?

The Carriere Motion Class III Correction Appliance is used to correct a Class III malocclusion (underbite). It can be used in replacement of traditional appliances such as Head Gear.

How Does the Carriere Motion Class III Correction Appliance Work?

The Carriere Motion Appliance is bonded to your teeth for the first 6-9 months of orthodontic treatment. Using specialized rubber bands that you attach to the Carriere Motion Appliance, the teeth move to the desired location.

Once the desired location of the teeth has been achieved, usually within 3 to 5 months, the Carriere Motion Appliance can be removed and the next phase of treatment can begin (usually with bonding braces).

What Are the Benefits of Using the Carriere Motion Class III correction Appliance?

- Shorter treatment time – the appliance is used before braces for faster movement of teeth and less time in braces.
- Elastics early on – elastics are worn in the beginning of treatment when most patients are still enthusiastic about treatment.
- Normal speech – the quality of your speech is not affected.
- No facial appliance needed – no need for bulky traditional appliances such as headgear that are worn outside the mouth.
- Sleek, low profile design – low profile design and smooth surface makes it comfortable to wear.
- Easy to keep clean – easy to brush and floss your teeth with the appliance on.

Instructions:

1. Always wear elastics on both sides, unless directed otherwise by the doctor.
2. Wear the elastics **at least 22 hours per day**. You should never have them out for more than 30 minutes.
3. If worn correctly, you should develop some spaces between the bottom front teeth.
4. If you need more elastics, please call or stop by the office for more.
5. If a brace or the appliance is loose, do not wear rubber bands until you see Dr. Cooke.